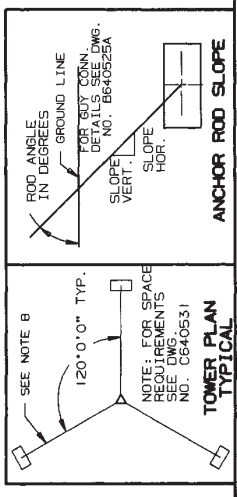


**GENERAL NOTES**

1. TOWER DESIGNS ARE IN ACCORDANCE WITH APPROVED NATIONAL STANDARD ANSI/EIA-222-E-1991 (NO ICE) (50 FT.) FOR ROUND MEMBER ANTENNAS. ALLOWABLE PROJ. AREA (50 FT.) FOR FLAT MEMBER ANTENNAS.
2. EQUIVALENT FLAT-PLATE ANTENNA AREAS, BASED ON EIA RS-222-C, ANTENNA AND MOUNTS ARE ASSUMED SYMMETRICALLY PLACED AT THE TOWER APEX.
3. ANCHOR RADIUS IS FROM TOWER BASE TO INTERSECTION OF ROD WITH FOR GUY HARDWARE INSTALLATION DETAILS SEE DWG. A871382.
4. TOWER DESIGNS AND GUY CHORD LENGTHS SHOWN ARE BASED ON LEVEL GROUND, ADD 6 PERCENT TO CHORD LENGTHS (FOR SAG AND CONNECTIONS) FOR FINAL CUT DEGREES FAHRENHEIT.
5. DO NOT INSTALL OR DISMANTLE TOWERS WITHIN FALLING DISTANCE OF ELEC. PERSONNEL, STEEL GUYS WHEN REQUIRED DURING ERECTION OR DISMANTLING, MUST BE SUPPLIED AND INSTALLED IN A HIGHLY VISIBLE LOCATION.
6. ALL ANTENNA INSTALLATIONS MUST BE GROUNDED IN ACCORDANCE WITH LOCAL EXTRA CABLE CLAMPS HAVE BEEN PROVIDED FOR TURNBUCKLE SAFETY REQUIREMENTS. FOR DETAILS SEE DWG. B660324 LATEST REVISION.



TOWER HT.	BASE PTER REAC. LBS.		ROD ANGLE		SLOPE		REAC. LBS.		
	NO.	REAC. LBS.	NO.	ANGLE	HOR.	VERT.	HOR.	VERT.	
40'	CB1	2,650	4A	GAR30	49.8	10.1	12	1,030	1,210
50'	CB1	3,120	4A	GAC303	41.3	12	10.6	1,680	1,480
60'	CB1	3,490	4A	GAC303	41.6	12	10.7	1,830	1,630
70'	CB1	3,890	4A	GAC303	41.2	12	10.5	2,050	1,800
80'	CB1	4,650	4A	GAC303	39.2	12	9.8	2,690	2,190
90'	CB1	5,040	4A	GAC303	39.0	12	9.7	2,960	2,400
100'	CB1	5,400	4A	GAC303	39.1	12	9.8	3,150	2,560

Rev. No.	Revision Description	Date	By	Check By
R3	CHANGED REACTIONS	10-4-98	BRT	CPM
R2	REV NOTE NO. 3	8-21-98	RKB	WNU
R1	EIA-222-E-1991 WAS EIA-222-D	12-9-91	RKB	WOL/KTL

THIS DRAWING IS THE PROPERTY OF ROHN, IT IS NOT TO BE REPRODUCED OR TRANSMITTED IN ANY FORM OR BY ANY MEANS, WITHOUT OUR WRITTEN CONSENT.

**R O H N**

Title: **BUYING DETAILS FOR 40'-100' 25G TOWERS 110 MPH BASIC WIND SPEED (NO ICE)**

Scale: NONE

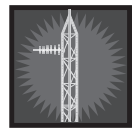
Drawn: RKB 12-27-90

Checked: KYG 1-28-91

App. Eng.: TS 2-21-91

App. Specs: AE 2-21-91

ENG. FILE: C902041 R3



### Parts List for #25G Guyed Towers 110 MPH Basic Wind Speed (No Ice)

Part Number	Tower Height						
	40'	50'	60'	70'	80'	90'	100'
25G	3	4	5	6	7	8	9
25AG2	1	1	1	1	1	1	1
BPG25G w/3/4 x 12PP	1	1	1	1	1	1	1
GA25GD	1	2	2	2	3	3	3
G.W. 3/16" EHS	175'	350'	425'	500'	825'	950'	1025'
BG2142	6	12	12	12	18	18	18
5/16" THH	6	12	12	12	18	18	18
T.B. 3/8 x 6 E&E	*	6	6	6	9	9	9
TBSAFETY	3	3	3	3	3	3	3
GAC303	*	3	3	3	3	3	3
AGKE	1	1	1	1	1	1	1
340028 Clamp	3	6	6	6	9	9	9
BGKE	2	2	2	2	2	2	2

\* **Note:** For 40' tower, 3 GAR30 anchors and 3 5/8 TBE&J turnbuckles are supplied rather than the items shown in the above chart.

Items shown above are necessary for complete "ground" guyed towers. (**Note:** Local engineers must be consulted to determine adequate base and anchor details and wind loading criteria for all roof type installations.)

Anchor grounding (AGKE) and base grounding (BGKE), as recommended by EIA, are included with the tower material. However, extra copper wire may be required for roof installations. See appropriate sheet for grounding material and order extra copper wire as a separate item.

Installation information and a safety package (part number ACWS) are also included with the tower material. This package consists of one anti-climb warning sign and two Danger-Watch for Wires labels along with other printed safety information.

All types of antenna installations should be thoroughly inspected by qualified personnel and re-marked with hazard and warning labels at least twice a year to insure safety and proper performance.